

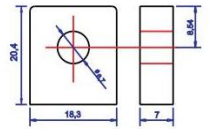
**Specifications**

Nominal Voltage	12V	
Nominal Capacity(10hr)	55AH	
Dimension	Length	230±2mm(9.06inch)
	Width	137±2mm(5.39inch)
	Height	210±2mm(8.27inch)
	Total Height	215±2mm(8.46inch)
Approx Weight	Approx. 16.5kg(+3%)	
Terminal Type	B4	
container Material	ABS(UL-94HB)	
Internal Resistance	Approx.5.0mΩ	
Rated Capacity	58.20AH	(20hr, 1.75V/cell,25°C/77°F)
	55.00AH	(10hr, 1.75V/cell,25°C/77°F)
	47.95AH	(5hr, 1.75V/cell,25°C/77°F)
	43.17AH	(3hr, 1.75V/cell,25°C/77°F)
	29.66AH	(1hr, 1.75V/cell,25°C/77°F)
Max. Discharge Current	550A(5S)	
Nominal Operating Temp. Range	25±3°C (77±5°F )	
Cycle Use	Charge Current Less Than 0.25CA	
	14.1V~14.7V@25°C(77°F)Temp. Coefficient -30mV/°C	
Floating Use	No limit on Initial Charging Current Voltage	
	13.5V~13.8V@25°C(77°F)Temp. Coefficient -20mV/°C	
Capacity affected by Temperature	40°C	103%
	25°C	100%
	0°C	86%
	-15°C	65%
Self-discharge	3 month	Remaining capacity: 91%
	6 month	Remaining capacity:82%
	12month	Remaining capacity:65%

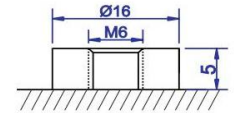


**Terminal Type**

- Terminal T11



- Terminal B4

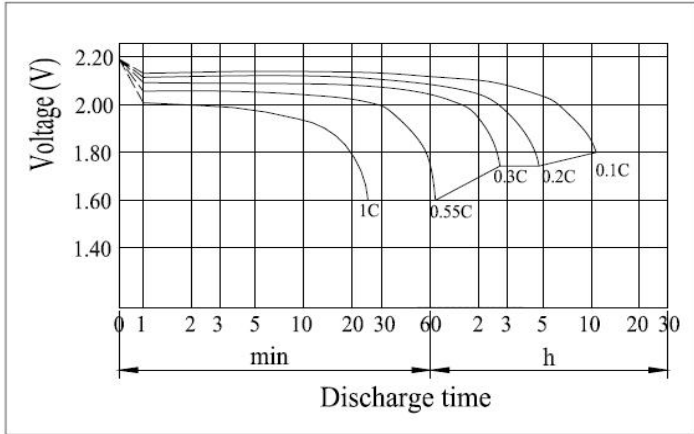


M6 Bolt

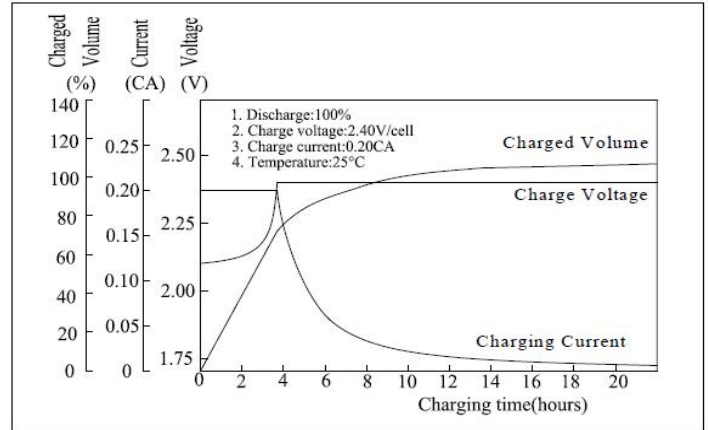
Constant Power Discharge at 25°C(77°F)												
F.V/Time	5min	10min	15min	30min	1h	2h	3h	4h	5h	6h	10h	20h
1.80V/cell	330.4	224.8	153.9	93.6	57.4	35.80	27.83	21.89	18.56	12.40	10.68	5.59
1.75V/cell	333.2	226.8	155.2	94.4	57.8	36.10	28.07	22.07	18.71	12.50	10.84	5.67
1.70V/cell	341.6	232.4	159.1	96.8	59.3	37.00	28.77	22.63	19.17	12.82	11.00	5.75
1.67V/cell	350.0	238.1	163.0	99.1	60.7	37.90	29.47	23.17	19.64	13.12	11.15	5.84
1.60V/cell	365.6	248.7	170.3	103.5	63.4	39.59	30.79	24.21	20.52	13.71	11.31	5.92

Constant Current Discharge at 25°C(77°F)												
F.V/Time	5min	10min	15min	30min	1h	2h	3h	4h	5h	6h	10h	20h
1.80V/cell	169.5	115.3	78.9	48.01	29.41	18.36	14.27	11.22	9.51	6.36	5.47	2.87
1.75V/cell	170.8	116.3	79.6	48.42	29.66	18.52	14.39	11.32	9.59	6.41	5.50	2.91
1.70V/cell	175.1	119.2	81.6	49.62	30.41	18.98	14.76	11.60	9.83	6.57	5.64	2.96
1.67V/cell	179.4	122.1	83.6	50.84	31.14	19.44	15.11	11.89	10.08	6.73	5.72	3.00
1.60V/cell	187.4	127.5	87.3	53.09	32.54	20.31	15.78	12.42	10.53	7.03	5.80	3.03

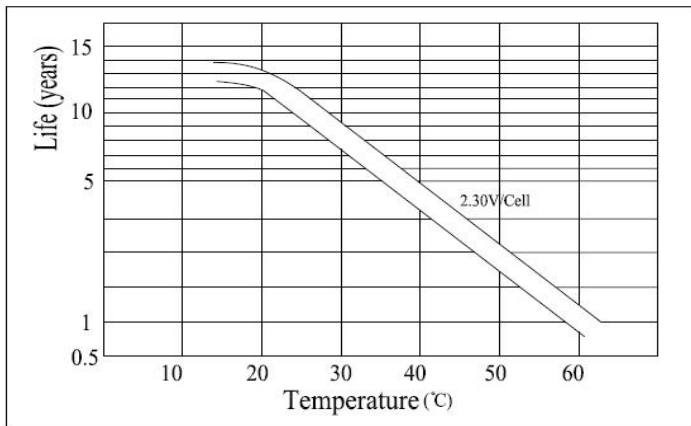
#### Discharge Characteristics



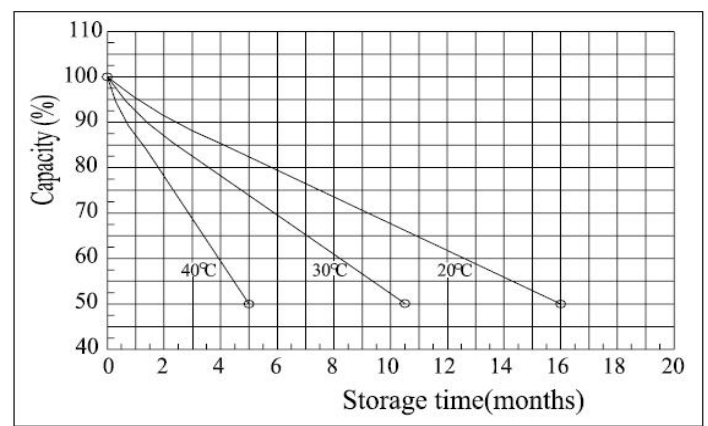
#### Float Charging Characteristics



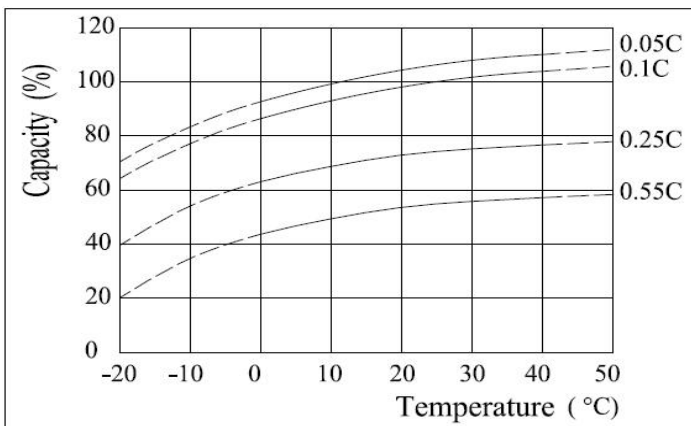
#### Floating Life on Temperature



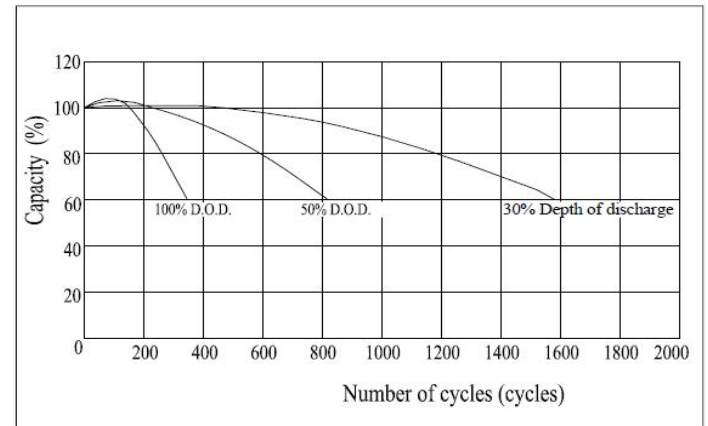
#### Self Discharge Characteristics ( 25°C(77°F) )



#### Temperature Effects in Relation to Battery Capacity



#### Cycle Life Relation to Depth of Discharge



Quanzhou Singlang Electric Technology Co., Ltd

[www.xnb-battery.com](http://www.xnb-battery.com)

